

DIESEL GEN' SET DEMCO

Characteristics of excellent product

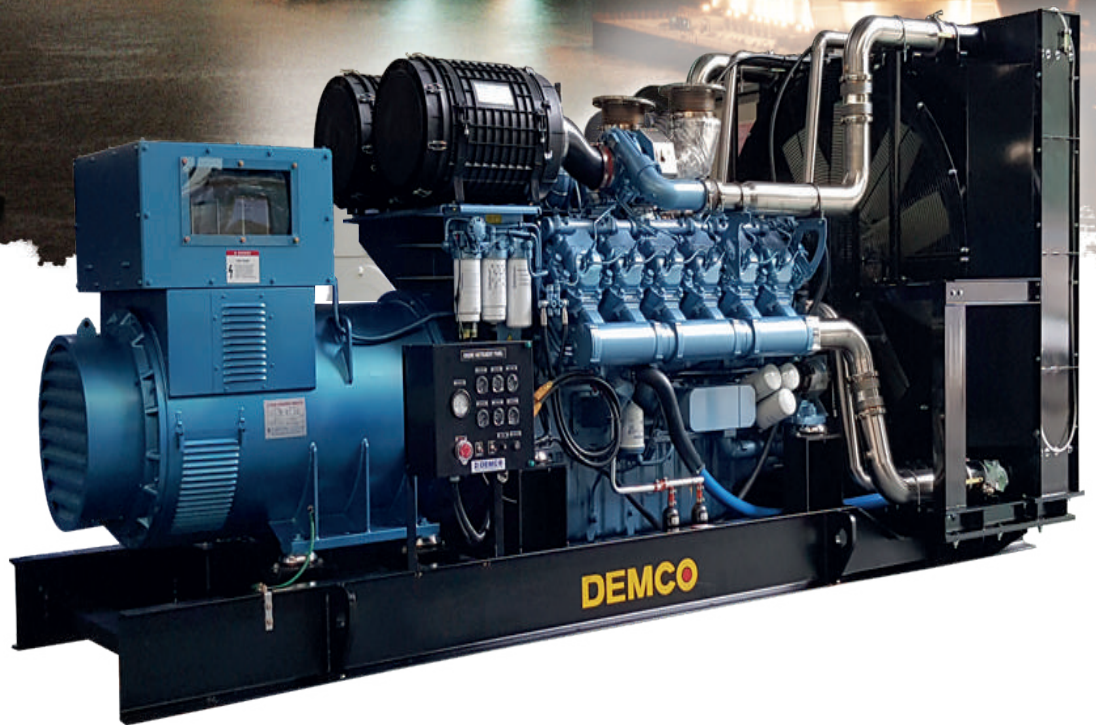
Diesel engine generator

Natural gas engine generator

Marine diesel generator

Hybrid Street Light

Daehung Electric Machinery





DEMCO



Greetings



(주)대흥기전은 창립 이후 30년 가까이 동기발전기의 고품질, 고품격, 고효율화에 전력을 추구해 온 회전전기기계 전문제조회사로서 소임을 다하고 있습니다. 이미 오래전에 조선용 기자재 전문공장으로 지정받아 엄격한 검사시스템의 운용으로 우수한 특성의 산업용 및 선박용 발전기를 제작하여 국내 유수의 조선소 및 기업에 다량의 납품실적을 갖고 있습니다.

그동안 쌓은 경험과 연구개발을 통하여 뛰어난 기술을 축적했으며, 이를 바탕으로 고품질의 발전기 생산 공급에 혼신의 노력을 기울이고 있습니다. 신뢰받는 제품을 통한 고객만족을 실현하고자 이미 1995년도에 ISO 9000 SERIES 인증 및 환경경영시스템인 ISO 14001 규격 인증을 득하였으며, 아울러 끊임없는 기술개발을 위하여 기업부설연구서를 설립, 운영함으로써 신기술 개발에 앞장서고 있습니다. 또한 저탄소 녹색에너지 개발로 소형풍력발전기 부문 신재생에너지인증업체로 지정되었으며, 2008년에는 디젤발전기부분 조달우수제품으로 지정받은바 있습니다. 2015년에는 진상부하에서도 안정되게 운전이 가능한 동기발전기의 개발로 신제품인증(NoP)을 받음으로써 조달우수제품으로도 지정 받았습니다.

여기에 만족하지 않고 부단한 연구개발을 통해 차별화된 기술력으로 국내 수요를 뛰어넘어 세계 각국에서 호평 받는 제품을 생산, 판매하고 있습니다. 앞으로도 고품격의 제품으로 고객에게 먼저 다가서는 기업, 그리고 고객을 섬기는 기업이 될 것임을 약속드립니다.

(주)대흥기전 대표이사 **서정기** 배상

Company History

- 1988. 5. <대흥기전사>로 상호 변경
- 1995. 3. 상용발전기세트 VIETNAM수출(660KW 10SETS 전자동 병렬)
- 이후 세계 각국의 선박용 및 산업용 발전기 대량 수출
- 1995. 10. <주식회사 대흥기전>으로 법인 전환(대표이사 서정기 취임)
- 1995. 12. 국제품질인증 ISO 9002/국내품질인증 KSA 9002 획득
- 1996. 2. 유망중소기업 선정 (한빛은행)
- 1996. 2. 단체표준 품질인증(EQ) 승인 (한국전기공업협동조합)
- 1996. 6. 우량기술기업 지정 (기술신용보증기금)
- 1996. 11. 병역특례지정업체 선정 (병무청)
- 1997. 2. 국제품질인증 ISO 9001/국내품질인증 KSA 9001 획득
- 1997. 11. 통상산업부장관 표창 수상 (품질경영부분)
- 1998. 6. 군납안전진단 수검
- 1999. 4. 단체표준 품질인증(우수EQ) (한국전기공업협동조합)
- 1999. 5. (주)KT 형식승인—
- 1999. 11. 기업부설연구소 설립. 인가(한국산업기술진흥협회 인정번호 : 991967)
- 2000. 2. 기술경쟁력 우수기업지정 (중소기업청)
- 2000. 4. 유망선진기술기업지정 (중소기업청)
- 2000. 11. 산업자원부장관 표창 수상
- 2001. 11. 국무총리 표창 수상
- 2001. 11. 기술혁신형중소기업(INNO-BIZ)기업 선정
- 2004. 2. 부산시 사하구 구평동 491번지 공장 신축 이전
- 2004. 5. 환경 경영 체제 (ISO 14001) 인증 획득
- 2005. 5. 실용신안등록(하이브리드 가로동용 광대역 풍력발전기 : 제0384140호)
- 2005. 12. CLEAN 사업장 인정
- 2006. 3. 우수(모범) 납세자 표창 (서부산세무서장)
- 2006. 6. 우수제품마크인증(GQ)
- 2006. 7. 성능인정(중소기업청 제12-032호)
- 2006. 12. 부산광역시 선도기업 선정 (인증번호 : 2011-그린-6)
- 2007. 1. 발명특허(여자기의 계자를 영구자석 복합 형식으로 한 회전계자형자여자식 동기발전기 : 제10-0678492호)
- 2007. 3. 발명특허(전력피크제어를 수행하는 발전시스템 및 그 제어 방법 : 제10-0699352호)
- 2007. 5. 신재생에너지 전문기업등록 (전문업종-풍력, 태양광에너지)
- 2007. 6. 발명특허(표시장치 부착형 하이브리드 콘트롤러 : 제10-0728392호)
- 2007. 10. 신재생에너지 성능 인증 (소형풍력 발전시스템-001)
- 2007. 10. 가스발전기 개발 제작 납품 410kw 2대 (창원대학교)
- 2007. 11. 발명특허(이중 자극 여자기를 갖는 동기 발전기 : 제10-0777809호)
- 2008. 3. 발명특허(피크 제어용 비상발전기 : 제10-0814891호)
- 2008. 10. 성능인증서(이중자극 여자기를 갖는 동기발전 20KW~2000KW 제12-081호)
- 2008. 11. 에너지절약운동 표창장(부산광역시시장 제2785호)
- 2008. 12. 우수제품지정증서(디젤발전기 : 2008189)
- 2008. 12. 우선구매추천 확인서
- 2009. 12. 벤처기업확인서(20090205107호)
- 2010. 3. CE마크인정(CA10P2048~50, CA10P2056~58)
- 2010. 7. 전기공사업등록(부산광역시 제부산-01351호)
- 2010. 8. 발명특허(브러시리스 자여자 동기발전기 : 제10-0975072호)
- 2010. 12. CE마크인정(디젤발전기 부문) DIG4115, DIG4175, DIG4600
- 2011. 6. 수출유망중소기업 지정증(제11부산울산-33호)
- 2013. 3. 발명특허(동기발전기의과도응답개선회로 : 제10-1020506호)
- 2014. 5. 발명특허(볼트와 너트의 이탈을 방지하기 위한 방진캡과 이것이 적용된 방진행거 : 제10-1399577호)
- 2014. 8. 발명특허(볼트와 너트의 이탈을 방지하기 위한 방진캡과 이것이 적용된 방진행거 : 제10-1433730호)
- 2014. 11. 발명특허(3상 동기 발전기의 출력전압을 제어하기 위한 자동전압 조정장치 및 그 제어 방법 : 제10-1462439호)
- 2014. 12. 발명특허(진동차폐장치 및 그것이 적용된 내진발전기 : 제10-1471148호)
- 2014. 12. 발명특허(평판형 여자기가 적용된 브러시리스 동기발전기 : 제10-1472056호)
- 2015. 9. 발명특허(고품질 전력을 출력하는 무튜닝 방식의 동기발전기 : 제10-1552301호)
- 2015. 10. 발명특허(부하에 따른 정격전압의 변동을 보상하는 교류 여자기 방식의 동기 발전기 : 제10-1362840호)
- 2015. 10. NeP신제품인증서(속응성을 갖는 양방향 계자 제어형 동기발전기 : NEP-MOTIE-2015-032)
- 2015. 12. 우수제품지정증서(지정번호 : 2015172)
- 2016. 4. KS제품인증서(WT0116001 : 소형풍력발전시스템)
- 2016. 6. 발명특허(매연과 소음을 동시에 저감하는 일체형 복합장치 : 제10-1633898호)
- 2016. 9. 발명특허(방진패드시공 생략형 방진 스토퍼와 그것이 적용된 내진 발전기 : 제10-1659315호)
- 2017. 2. 발명특허(출력전압 안정화의 신뢰도가 향상된 브러시리스 동기발전기 : 제10-1708023호)

Characteristics of excellent product



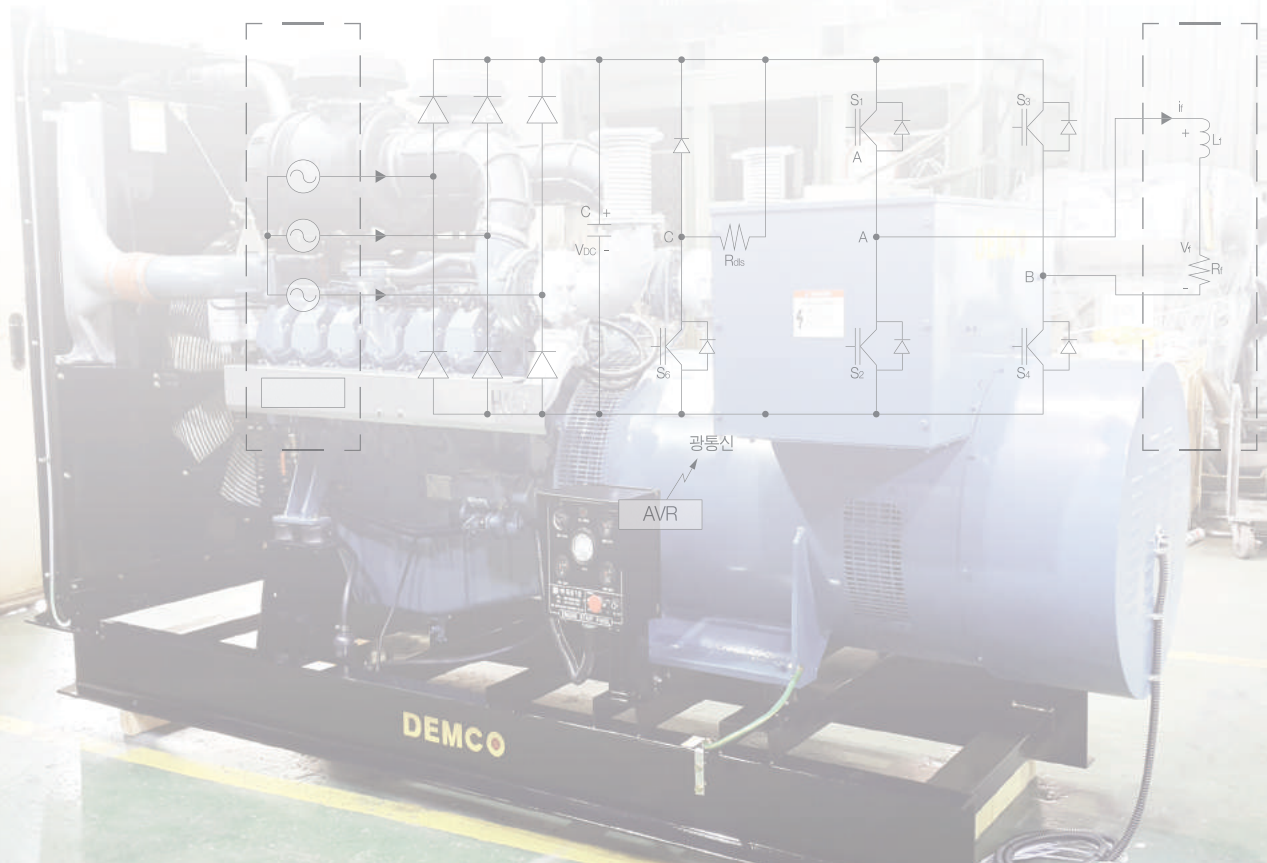
부하변동에 대한 속응성을 갖는 양방향 계자 제어형 동기발전기(6,600V이하, 20~2,000KW)

Having Quick Response Properties Synchronous Generator with Bidirectionally Controlled Field(Not exceeding 6,600V, 20~2,000KW)

- 특허 제10-1708023호
- 특허 제10-1020506호
- 특허 제10-0975072호
- NeP(신제품인증) NEP-MOTIE-2015-032호
- 조달우수제품지정번호 2015172호

- 콘덴서 등 용량성 부하에서도 안정된 전력공급, 즉 진상 및 지상부하를 구분하지 않고 안정된 전력을 공급할 수 있다.
- 큰 부하 변동 시에도 과도전압상승 및 과도전압강하가 매우 작으며, 전압 회복이 빠르다.
- 비선형 부하(UPS, 정류기, INVERTER 등)에 대한 고조파 필터 설치의 제한으로부터 자유롭다.

[양방향 계자 제어형 동기발전기 구성]



Characteristics of excellent product

Kinds	Electric Generator Output (KW)		Engine	Engine Power		Formal Size and Weight		Control Board	Voltage	Engine
	Emergency Use	Common Use		Emergency Use	Common Use	Dimension L x W x H(mm)	Weight (kg)			
DBG0020T	20	18	AG39	45	42	1450x600x1100	650	Set-in Type	380/220V	HYUNDAI
DBG0020B								Separate Type		
DBG0026T	26	23	AG39	45	42	1450x600x1100	650	Set-in Type	380/220V	HYUNDAI
DBG0026B								Separate Type		
DBG0030T	30	27	AG49	55	75	1550x600x1100	750	Set-in Type	380/220V	HYUNDAI
DBG0030B								Separate Type		
DBG0050T	50	45	D4AK-G	82	74	1800x750x1200	1,100	Set-in Type	380/220V	HYUNDAI
DBG0050B								Separate Type		
DBG0060T	60	54	DB58	95	87	2250x850x1330	1,300	Set-in Type	380/220V	DOOSAN
DBG0060B								Separate Type		
DBG0075T	75	68	D1146	143	130	2400x850x1491	1,540	Set-in Type	380/220V	DOOSAN
DBG0075B								Separate Type		
DBG0090T	90	81	D1146	143	130	2400x850x1491	1,540	Set-in Type	380/220V	DOOSAN
DBG0090B								Separate Type		
DBG0115T	115	104	D1146T	202	170	2400x850x1491	1,600	Set-in Type	380/220V	DOOSAN
DBG0115B								Separate Type		
DBG0130T	130	118	D1146T	202	170	2400x850x1491	1,600	Set-in Type	380/220V	DOOSAN
DBG0130B								Separate Type		
DBG0145T	145	131	DE1 2T	270	245	2600x920x1485	2,000	Set-in Type	380/220V	DOOSAN
DBG0145B								Separate Type		
DBG0175T	175	159	DE1 2T	270	245	2600x920x1485	2,000	Set-in Type	380/220V	DOOSAN
DBG0175B								Separate Type		
DBG0200T	200	181	P086TI	303	279	2650x930x1685	2,000	Set-in Type	380/220V	DOOSAN
DBG0200B								Separate Type		
DBG0230T	230	209	P126TI-3	375	343	2994x1115x1633	2,300	Set-in Type	380/220V	DOOSAN
DBG0230B								Separate Type		
DBG0250T	250	227	P126TI-3	375	343	2994x1115x1633	2,300	Set-in Type	380/220V	DOOSAN
DBG0250B								Separate Type		
DBG0275T	275	250	P126T	405	378	2994x1115x1633	2,360	Set-in Type	380/220V	DOOSAN
DBG0275B								Separate Type		
DBG0300T	300	272	P126TI- II	465	418	2994x1115x1633	2,600	Set-in Type	380/220V	DOOSAN
DBG0300B								Separate Type		
DBG0300H								Separate Type		
DBG0330T	330	300	P158LE-2	510	470	2990x1397x1794	2,940	Set-in Type	380/220V	DOOSAN
DBG0330B								Separate Type		
DBG0330H								Separate Type		

Characteristics of excellent product

Kinds	Electric Generator Output (KW)		Engine	Engine Power		Formal Size and Weight		Control Board	Voltage	Engine
	Emergency Use	Common Use		Emergency Use	Common Use	Dimension L x W x H(mm)	Weight (kg)			
DBG0360T	360	327	P158LE-1	546	498	2990×1397×1794	2,940	Set-in Type	380/220V	DOOSAN
DBG0360B								Separate Type	380/220V	DOOSAN
DBG0360H								Separate Type	330 0/660 0V	DOOSAN
DBG0400T	400	363	P158LE	623	547	2990×1397×1794	3,100	Set-in Type	380/220V	DOOSAN
DBG0400B								Separate Type	380/220V	DOOSAN
DBG0400H								Separate Type	330 0/660 0V	DOOSAN
DBG0450T	450	409	DP158LC	697	634	2990×1397×1794	3,100	Set-in Type	380/220V	DOOSAN
DBG0450B								Separate Type	380/220V	DOOSAN
DBG0450H								Separate Type	330 0/660 0V	DOOSAN
DBG0500T	500	454	DP158LD	756	687	2990×1397×1854	3,280	Set-in Type	380/220V	DOOSAN
DBG0500B								Separate Type	380/220V	DOOSAN
DBG0500H								Separate Type	330 0/660 0V	DOOSAN
DBG0550T	550	500	DP180LA	836	760	3200×1397×1854	3,990	Set-in Type	380/220V	DOOSAN
DBG0550B								Separate Type	380/220V	DOOSAN
DBG0550H								Separate Type	330 0/660 0V	DOOSAN
DBG0600T	600	545	DP180LB	899	817	3200×1397×1854	3,990	Set-in Type	380/220V	DOOSAN
DBG0600B								Separate Type	380/220V	DOOSAN
DBG0600H								Separate Type	330 0/660 0V	DOOSAN
DBG0650T	650	590	DP222LA	1002	911	3390×1397×2130	4,350	Set-in Type	380/220V	DOOSAN
DBG0650B								Separate Type	380/220V	DOOSAN
DBG0650H								Separate Type	330 0/660 0V	DOOSAN
DBG0700T	700	636	DP222LB	1063	967	33390×1397×2130	4,350	Set-in Type	380/220V	DOOSAN
DBG0700B								Separate Type	380/220V	DOOSAN
DBG0700H								Separate Type	330 0/660 0V	DOOSAN
DBG0750T	750	681	DP222LC	1126	1023	3390×1397×2130	4,520	Set-in Type	380/220V	DOOSAN
DBG0750B								Separate Type	380/220V	DOOSAN
DBG0750H								Separate Type	330 0/660 0V	DOOSAN
DBG0800B-C	800	727	QSK23-G3	1217	1100	4181×1879×2052	7,140	Separate Type	380/220V	CUMMINS
DBG0800H-C								Separate Type	330 0/660 0V	CUMMINS
DBG0800B-M	800	727	S12A2-PT A	1146	980	3720×1620×2142	6,750	Separate Type	380/220V	MITSUBISHI
DBG0800H-M								Separate Type	330 0/660 0V	MITSUBISHI
DBG0800B-U	800	727	12V2000G85	1194	1086	3900×1480×2096	7,600	Separate Type	380/220V	MTU
DBG0800H-U								Separate Type	330 0/660 0V	MTU
DBG0800B-R	800	727	3412S TA	1180	1071	4485×1741×1986	7,500	Separate Type	380/220V	CATERPILLAR
DBG0800H-R								Separate Type	330 0/660 0V	CATERPILLAR

Characteristics of excellent product

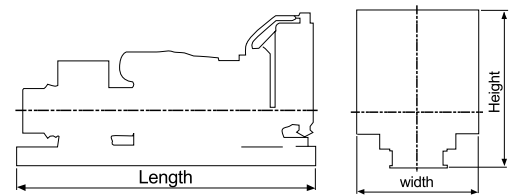
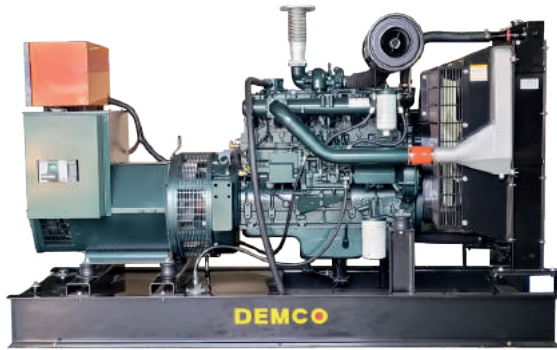
DIESEL GEN SET
DEMCO

DEMCO

Kinds	Electric Generator Output (KW)		Engine	Engine Power		Formal Size and Weight		Control Board	Voltage	Engine
	Emergency Use	Common Use		Emergency Use	Common Use	Dimension L x W x H(mm)	Weight (kg)			
DBG0900B-C	900	818	QS T30-G3	1369	1237	4297x1480x2139	6,569	Separate Type	380/220V	CUMMINS
DBG0900H-C								Separate Type	330 0/660 0V	CUMMINS
DBG0900B-M	900	818	S12A2-PT A2	1233	1118	4100x1620x2142	7,200	Separate Type	380/220V	MITSUBISHI
DBG0900H-M								Separate Type	330 0/660 0V	MITSUBISHI
DBG0900B-U	900	818	16V2000G45	1354	1227	4270x1760x2292	9,300	Separate Type	380/220V	MTU
DBG0900H-U								Separate Type	330 0/660 0V	MTU
DBG0900B-R	900	818	C32 ATA AC	1357	1228	4767x2024x2223	9,000	Separate Type	380/220V	CATERPILLAR
DBG0900H-R								Separate Type	330 0/660 0V	CATERPILLAR
DBG1000B-C	1000	909	QS T30-G4	1512	1369	4453x1752x2332	7,053	Separate Type	380/220V	CUMMINS
DBG1000H-C								Separate Type	330 0/660 0V	CUMMINS
DBG1000B-M	1000	909	S12H-PT A	1448	1314	4350x1740x2369	9,950	Separate Type	380/220V	MITSUBISHI
DBG1000H-M								Separate Type	330 0/660 0V	MITSUBISHI
DBG1000B-U	1000	909	16V2000G85	1495	1354	4370x1770x2250	9,700	Separate Type	380/220V	MTU
DBG1000H-U								Separate Type	330 0/660 0V	MTU
DBG1000B-R	1000	909	C32 ATA AC	1502	1372	4767x2024x2223	9,000	Separate Type	380/220V	CATERPILLAR
DBG1000H-R								Separate Type	330 0/660 0V	CATERPILLAR
DBG1250B-C	1250	1136	KTA50-G3	1876	1767	5112x1960x2237	11,168	Separate Type	380/220V	CUMMINS
DBG1250H-C								Separate Type	330 0/660 0V	CUMMINS
DBG1250B-M	1250	1136	S12R-PT A2	1904	1729	4700x1860x2617	11,500	Separate Type	380/220V	MITSUBISHI
DBG1250H-M								Separate Type	330 0/660 0V	MITSUBISHI
DBG1250B-U	1250	1136	18V2000G765	1839	1671	5036x2275x2454	11,500	Separate Type	380/220V	MTU
DBG1250H-U								Separate Type	330 0/660 0V	MTU
DBG1250B-R	1250	1136	3512TA	1818	1662	5173x2094x2367	12,500	Separate Type	380/220V	CATERPILLAR
DBG1250H-R								Separate Type	330 0/660 0V	CATERPILLAR
DBG1500B-C	1500	1363	KTA50-G9	2251	1882	5690x2033x2756	11,362	Separate Type	380/220V	CUMMINS
DBG1500H-C								Separate Type	330 0/660 0V	CUMMINS
DBG1500B-M	1500	1363	S12R-PT AA2	2139	1939	5000x1860x2617	12,000	Separate Type	380/220V	MITSUBISHI
DBG1500H-M								Separate Type	330 0/660 0V	MITSUBISHI
DBG1500B-U	1500	1363	12V4000G43	2328	2038	4980x2430x2950	13,000	Separate Type	380/220V	MTU
DBG1500H-U								Separate Type	330 0/660 0V	MTU
DBG1500B-R	1500	1363	3512BT A	2172	1971	5128x2286x2332	13,500	Separate Type	380/220V	CATERPILLAR
DBG1500H-R								Separate Type	330 0/660 0V	CATERPILLAR

DOOSAN ENGINE SERIES

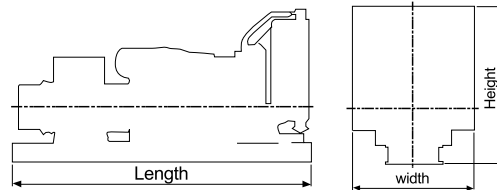
DEMCO



SET MODEL		DIG4060	DIG4075	DIG4090	DIG4115	DIG4130	DIG4145	DIG4175	DIG4200	DIG4230	DIG4250	DIG4275	DIG4300	
GENERATOR	Stand-by	KW	60/50	75/61	90/73	115/91	130/103	145/120	175/145	200/175	230/205	250/225	275/250	300/225
	Prime	KW	54/45	68/54	81/65	104/88	118/100	131/110	159/133	181/155	209/184	227/200	250/215	272/235
	Voltage	V	220/127, 380/220, 440/254. 3300, 6600											
	Frequency	Hz	60/50											
	Revolution	RPM	1800/1500											
	Phase/Wire		1Ø 2W, 1Ø 3W, 3Ø 3W, 3Ø 4W											
	Power Factor	%	80(LA GGING)											
	Excitation		Brushless Self Excitation Revolving Field											
Insulation Class		F or H												
ENGINE	Manufacturer		Doosan Infracore Co., Ltd.											
	Model		DB58	D1146	D1146	D1146T	D1146T	DE1 2T	DE1 2T	P086TI	P126TI-3	P126TI-3	P126TI	P126TI-II
	Stand-by	PS	96/80	143/116	143/116	202/160	202/160	270/226	270/226	303/270	375/343	375/343	405/370	465/400
	Prime	PS	87/73	130/105	130/105	170/145	170/145	245/205	245/205	279/240	343/304	343/304	378/328	418/360
	Revolution	RPM	1800/1500											
	No. of Cylinder		I-6	I-6	I-6	I-6	I-6	I-6	I-6	I-6	I-6	I-6	I-6	I-6
	Bore X Stroke	mm	102x118	111x139	111x139	111x139	111x139	123x155	123x155	111x139	123x155	123x155	123x155	123x155
	Displacement	L	5.785	8.071	8.071	8.071	8.071	11.051	11.051	8.071	11.051	11.051	11.051	11.051
	Compression Ratio		17.5 : 1	17.5 : 1	17.5 : 1	16.8 : 1	16.8 : 1	17.1 : 1	17.1 : 1	16.4 : 1	17 : 1	17 : 1	17 : 1	17 : 1
	Engine Type		4 Cycle Water cooled											
	Aspiration		NATURAL					TURBO CHARGED						
	Starting System		Starting Electric Motor by Battery											
	Governor		Mechanical Type							Electric Type				
	Fuel Consumption	L/Hr	18.1/15.3	18.8/17.4	22.6/20.8	31.8/23.9	35.9/27	41/33.8	49/41	56.8/48.4	62.7/54.9	68.2/59.6	76.5/66.2	89.5/77.6
Coolant Capacity	L	12	14	14	14	14	19	19	14	19	19	19	19	
Lub. Oil Capacity	L	19	15.5	15.5	15.5	15.5	23	23	15.5	23	23	23	23	
DIM	Length	mm	2250	2400	2400	2400	2400	2600	2600	2650	2994	2994	2994	2994
	Width	mm	850	850	850	850	850	920	920	930	1115	1115	1115	1115
	Height	mm	1330	1491	1491	1941	1491	1485	1485	1685	1633	1633	1633	1633
	Weight	Kg	1300	1540	1540	1600	1600	2000	2000	2000	2300	2300	2360	2600

※ Specifications subject to change without notice

※ Fuel Consumption subject to change depend on the condition



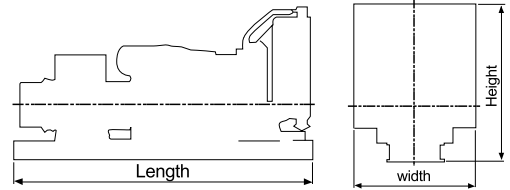
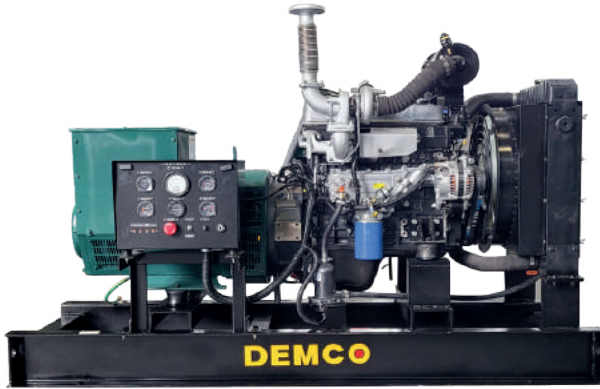
SET MODEL		DIG4330	DIG4360	DIG440 0	DIG4450	DIG450 0	DIG4550	DIG461 0	DIG4660	DIG470 0	DIG4750	DIG41 000	
GENERATOR	Stand-by	KW	330/280	360/320	400/360	450/400	500/450	550/500	610/550	660/-	700/600	750/660	1000/880
	Prime	KW	300/250	327/295	363/310	409/363	454/409	500/455	554/500	600/-	636/545	681/600	909/770
	Voltage	V	220/127, 380/220, 440/254. 3300, 6600										
	Frequency	Hz	60/50										
	Revolution	RPM	1800/1500										
	Phase/Wire		1Ø 2W, 1Ø 3W, 3Ø 3W, 3Ø 4W										
	Power Factor	%	80(LA GGING)										
	Excitation		Brushless Self Excitation Revolving Field										
	Insulation Class		F or H										
ENGINE	Manufacturer		Doosan Infracore Co., Ltd.										MAN Engine
	Model		P158LE-2	P158LE-1	P158LE	DP158LC	DP158LD	DP180LA	DP180LB	DP222LA	DP222LB	DP222LC	D2862LE223
	Stand-by	PS	510/437	546/492	623/563	697/610	756/693	836/750	899/832	1002/-	1063/903	1126/983	1519/1197
	Prime	PS	470/399	498/444	547/494	634/555	687/630	760/682	817/756	911/-	967/821	1023/894	1251/1047
	Revolution	RPM	1800/1500										
	No. of Cylinder		V-8	V-8	V-8	V-8	V-8	V-10	V-10	V-12	V-12	V-12	V-12
	Bore X Stroke	mm	128x142	128x142	128x142	128x142	128x142	128x142	128x142	128x142	128x142	128x142	128x157
	Displacement	L	14,618	14,618	14,618	14,618	14,618	18,273	18,273	21,927	21,927	21,927	24,200
	Compression Ratio		15:1	15:1	15:1	15:1	15:1	15:1	15:1	15:1	15:1	15:1	17:1
	Engine Type		4 Cycle Water cooled										
	Aspiration		TURBO CHARGED										
	Starting System		Starting Electric Motor by Battery										
	Governor		Electric Type										
	Fuel Consumption	L/Hr	93.5/84.4	104/93.6	115.7/102.9	123.8/110.9	139.6/127.8	154.1/135.4	165.3/149.5	179.9/-	192.8/162.7	203.8/172.8	232.5/209
Coolant Capacity	L	20	20	20	20	20	21	21	23	23	23	54	
Lub. Oil Capacity	L	28	28	28	22	22	34	34	40	40	40	72	
DIM	Length	mm	2990	2990	2990	2990	2990	3170	3170	3390	3390	3390	3950
	Width	mm	1397	1397	1397	1397	1397	1397	1397	1397	1397	1397	1596
	Height	mm	1794	1794	1794	1794	1854	1854	1854	2130	2130	2130	2094
	Weight	Kg	2940	2940	3100	3150	3280	3990	3990	4350	4350	4520	5900

※ Specifications subject to change without notice

※ Fuel Consumption subject to change depend on the condition

HYUNDAI ENGINE SERIES

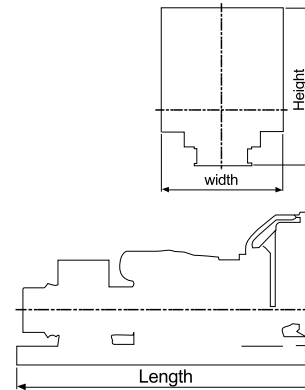
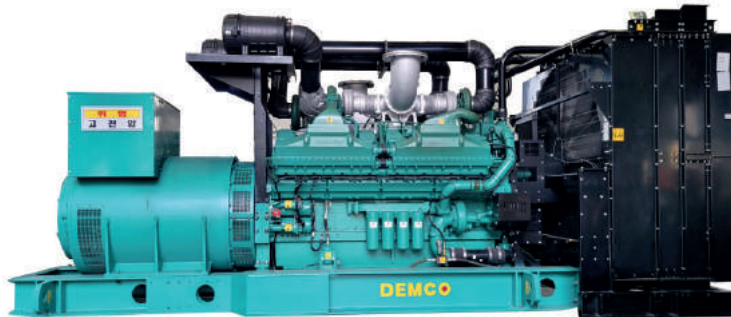
DEMCO



SET MODEL		DIG4020	DIG4026	DIG4040	DIG4050	DIG4070	DIG4085	DIG4115	DIG4165	DIG4200	DIG4230	DIG4275	DIG4300	DIG4320	
GENERATOR	Stand-by	KW	20/16	26/-	40/33	50/37	80/61	85/72	115/99	165/150	200/175	230/210	275/241	300/267	320/-
	Prime	KW	18/15	23/-	33/30	45/33	73/55	77/65	105/91	148/136	182/159	210/184	250/220	273/248	280/-
	Voltage	V	220/127, 380/220, 440/254, 3300, 6600												
	Frequency	Hz	60/50												
	Revolution	RPM	1800/1500												
	Phase/Wire		1Ø 2W, 1Ø 3W, 3Ø 3W, 3Ø 4W												
	Power Factor	%	80(LA GGING)												
	Excitation		Brushless Self Excitation Revolving Field												
	Insulation Class		F or H												
ENGINE	Manufacturer		HYUNDAI MOTOR COMPANY												
	Model		AG39	AG39	D4AF-G	D4AK-G	D4DA-G	D6BR-G1	D6BT-G1	D6AZ-G2	D6AZ-G1	D6AC-G1	D6CA-G3	D6CA-G2	D6CA-G2
	Stand-by	PS	28/23	45/-	60/50	82/60	107/85	130/110	180/155	250/230	309/270	350/320	410/360	450/400	490/-
	Prime	PS	25/21	42/-	54/45	74/54	95/75	117/99	162/140	225/207	278/243	315/288	400/360	440/400	440/-
	Revolution	RPM	1800/1500												
	No. of Cylinder		I-4	I-4	I-4	I-4	I-4	I-6	I-6	I-6	I-6	I-6	I-6	I-6	I-6
	Bore X Stroke	mm	91.1x100	91.1x100	104x105	100x105	104x115	118x115	118x115	130x140	130x140	130x140	133x155	133x155	133x155
	Displacement	L	2.607	2.607	3.568	3.298	3.907	7.545	7.545	11.149	11.149	11.149	12.92	12.92	12.92
	Compression Ratio		22:1	22:1	17.5:1	16:1	16.5:1	17.5:1	16:1	16.5:1	16.5:1	16.5:1	17:1	17:1	17:1
	Engine Type		4 Cycle Water cooled												
	Aspiration		NATURAL			TURBO CHARGED		NATURAL		TURBO CHARGED					
	Starting System		Starting Electric Motor by Battery												
	Governor		Mechanical Type							Electric Type					
	Fuel Consumption	L/Hr	6.5	10.3	12	15.6	20	27.4	34.5	46	58.7	64.3	73	81	89
	Coolant Capacity	L	3.9	3.9	8.3	8.3	8.3	12.5	12.5	22	22	24	42	42	42
Lub. Oil Capacity	L	5.4	5.4	8.5	8.5	8.5	13	13	24	25	24	28	28	28	
DIM	Length	mm	1450	1450	1800	1800	1950	2435	2310	2500	2500	2600	2890	2910	2930
	Width	mm	600	600	750	750	750	800	800	880	880	1080	1025	1025	1025
	Height	mm	1100	1100	1200	1200	1200	1310	1517	1460	1460	1430	1573	1573	1573
	Weight	Kg	650	650	1050	1100	1300	1400	1510	2100	2200	2700	2800	3000	3100

※ Specifications subject to change without notice

※ Fuel Consumption subject to change depend on the condition



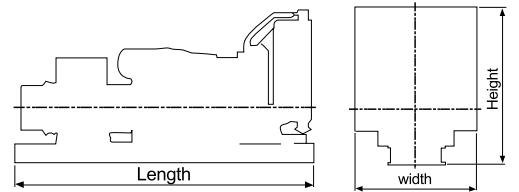
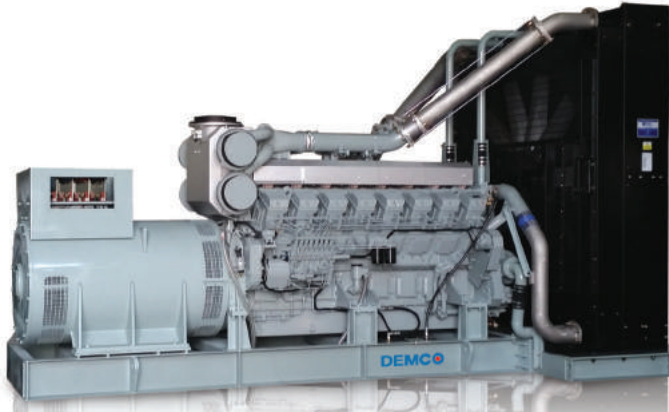
SET MODEL		DIG0800-C	DIG0900-C	DIG0900-C	DIG1000-C	DIG1000-C	DIG1250-C	DIG1500-C	DIG1750-C	DIG2000-C	DIG2250-C	DIG2500-C	
GENERATOR	Stand-by	KW	800/705	900/800	900/800	1000/907	1000/907	1250/1171	1500	1750	2000	2250	2500
	Prime	KW	727/641	818/699	818/699	909/825	909/825	1136/1065	1363	1590	1818	-	2273
	Voltage	V	220/127, 380/220, 440/254, 3300, 6600										
	Frequency	Hz	60/50										
	Revolution	RPM	1800/1500										
	Phase/Wire		1Ø 2W, 1Ø 3W, 3Ø 3W, 3Ø 4W										
	Power Factor	%	80(LA GGING)										
	Excitation		Brushless Self Excitation Revolving Field										
Insulation Class		F or H											
ENGINE	Manufacturer		CUMMINS										
	Model		QSK23-G3	QS T30-G3	KTA38-G3	QS T30-G4	KTA38-G4	KTA50-G3	KTA50-G9	QSK60-G5	QSK60-G6	QSK60-G9	QSK78-G6
	Stand-by	HP	1200/1030	1350/1200	1340/1200	1490/1300	1490	1850/1742	2220	2547	2922	3251	3778
	Prime	HP	1085/940	1220/1080	1220/1080	1350/1180	1350	1645/1541	1855	2312	2647	-	3371
	Revolution	RPM	1800/1500										
	No. of Cylinder		I-6	V-12	V-12	V-12	V-12	V-16	V-16	V-16	V-16	V-16	V-18
	Bore X Stroke	mm	170x170	140x165	159x159	140x165	159x159	159x159	159x159	159x190	159x190	159x190	170x190
	Displacement	L	23.15	30.5	38	30.5	37.8	50.3	50.3	60.2	60.2	60.2	77.6
	Compression Ratio		16 : 1	14 : 1	13.9 : 1	14 : 1	13.9 : 1	13.9 : 1	13.9 : 1	14.5 : 1	14.5 : 1	14.5 : 1	15.3 : 1
	Engine Type		4 Cycle Water cooled										
	Aspiration		Turbo charged and Air-to-air intercooled						Turbo charged and Air-to-air intercooled				
	Starting System		Starting Electric Motor by Battery										
	Governor		Electric Type										
	Fuel Consumption	L/Hr	212/178	224/204	238	267/224	271	330/293	392	443	521	569	663
Coolant Capacity	L	95.5	201	199	203	199	351	521	454	454	454	729	
Lub. Oil Capacity	L	135	132.5	114	132.5	114	120	204	280	280	280	295	
DIM	Length	mm	4180	4297	4300	4453	4470	5112	5690	6025	6175	6175	7900
	Width	mm	1879	1480	2080	1752	1785	1960	2033	2494	2494	2494	2494
	Height	mm	2052	2139	2189	2332	2229	2237	2756	3116	3116	3116	3437
	Weight	Kg	7100	6600	8308	7100	8350	11200	11362	15075	15891	17781	23427

※ Specifications subject to change without notice

※ Fuel Consumption subject to change depend on the condition

MITSUBISHI ENGINE SERIES

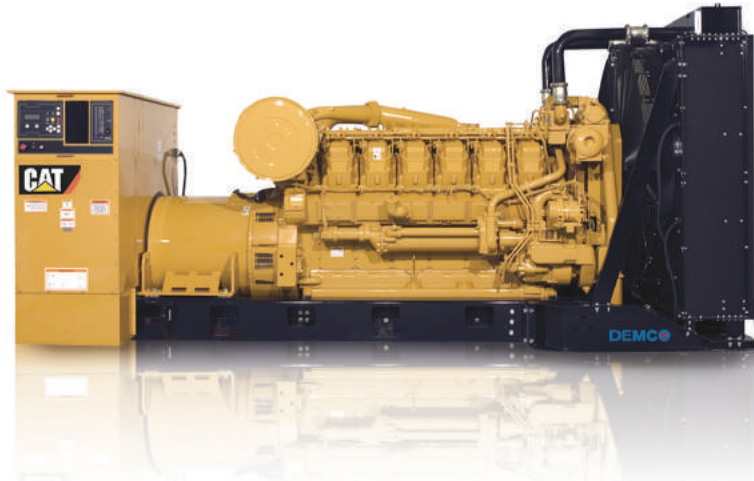
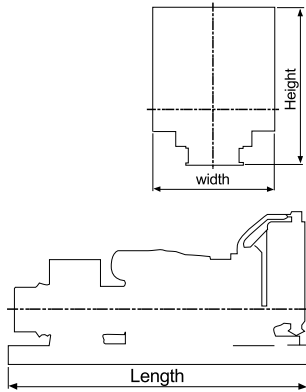
DEMCO



SET MODEL		DIG0800-M	DIG0900-M	DIG1000-M	DIG1200-M	DIG1320-M	DIG1500-M	DIG1600-M	DIG1750-M	DIG2000-M		
GENERATOR	Stand-by	KW	800/690	900/800	1000/907	1200/1000	1320/1200	1500/1290	1600/1500	1750/1590	2000/1750	
	Prime	KW	727/620	818/699	909/825	1091/900	1200/1070	1364/1100	1455/1340	1590/1490	1818/1636	
	Voltage	V	220/127, 380/220, 440/254, 3300, 6600									
	Frequency	Hz	60/50									
	Revolution	RPM	1800/1500									
	Phase/Wire		1Ø 2W, 1Ø 3W, 3Ø 3W, 3Ø 4W									
	Power Factor	%	80(LA GGING)									
	Excitation		Brushless Self Excitation Revolving Field									
Insulation Class		F or H										
ENGINE	Manufacturer		MITSUBISHI									
	Model		S1 2A2-PT A	S1 2A2-PT A2	S1 2H-PT A	S1 2R-PT A	S1 2R-PT A2	S1 2R-PT AA2	S1 6R-PT A	S1 6R-PT A2	S1 6R-PT AA2	
	Stand-by	HP	1146/970	1233/1096	1448/1314	1702/1595	1904/1723	2139/1882	2279/2132	2547/2332	2822/2540	
	Prime	HP	980/880	1118/994	1314/1194	1528/1448	1729/1562	1939/1711	2064/1440	2312/2118	2540/2257	
	Re volution	RPM	1800/1500									
	No. of Cylinder		V-12	V-12	V-12	V-12	V-12	V-12	V-16	V-16	V-16	
	Bore X Stroke	mm	150×160	150×160	150×175	170×180	170×180	170×180	170×180	170×180	170×180	
	Displacement	L	33.93	33.93	37.11	49.03	49.03	49.03	65.37	65.37	65.37	
	Compression Ratio		14.5:1	15.3:1	14:1	14:1	13.5:1	13.5:1	14:1	13.5:1	13.5:1	
	Engine Type		4 Cycle Water Cooled									
	Aspiration		Turbocharged with Aftercooler									Turbo charged with air-to-air
	Starting System		Starting Electric Motor by Battery									
	Governor		Electric Type									
	Fuel Consumption	L/Hr	227/187	261/228	281/254	344/307	388/317	418/372	438/393	489/448	540/422	
Coolant Capacity	L	215	215	250	335	335	327	350	445	400		
Lub. Oil Capacity	L	120	120	200	180	180	180	230	230	230		
DIM	Length	mm	3720	4100	4350	4500	4700	5000	5600	5600	5750	
	Width	mm	1620	1620	1740	1860	1860	1860	1820	2670	2430	
	Height	mm	2142	2142	2369	2617	2617	2617	2832	2910	3376	
	Weight	Kg	6750	7200	9950	11000	11500	12000	12700	15150	16500	

※ Specifications subject to change without notice

※ Fuel Consumption subject to change depend on the condition



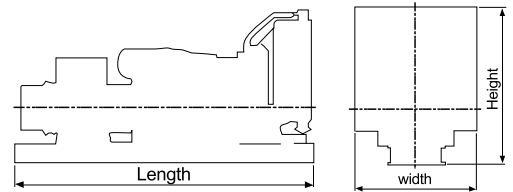
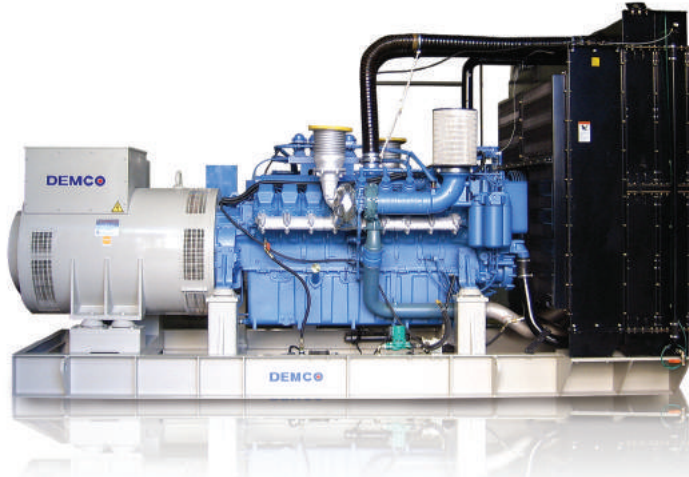
SET MODEL		DIG0800-R	DIG0900-R	DIG1000-R	DIG1250-R	DIG1500-R	DIG1750-R	DIG2000-R	DIG2250-R	DIG3000-R	
GENERATOR	Stand-by	KW	800	900	1000	1250	1500	1750	2000	2250	3000
	Prime	KW	727	818	909	1136	1363	1590	1818	2000	2725
	Voltage	V	220/127, 380/220, 440/254, 3300, 6600								
	Frequency	Hz	60								
	Revolution	RPM	1800								
	Phase/Wire		1Ø 2W, 1Ø 3W, 3Ø 3W, 3Ø 4W								
	Power Factor	%	80(LA GGING)								
	Excitation		Brushless Self Excitation Revolving Field								
Insulation Class		F or H									
ENGINE	Manufacturer		CATERPILLAR								
	Model		3412S TA	C32 ATA AC	C32 ATA AC	3512TA	3512BT A	3516TA	3516BT A	3516BT A	C175
	Stand-by	HP	1180	1337	1482	1801	2168	2518	2876	3210	4423
	Prime	HP	1071	1220	1380	1661	1967	2304	2628	2876	4034
	Revolution	RPM	1800								
	No. of Cylinder		V-12	V-12	V-12	V-12	V-12	V-16	V-16	V-16	V-16
	Bore X Stroke	mm	1372x1524	145x162	145x162	170x190	170x190	170x190	170x190	170x190	175x220
	Displacement	L	2703	32.1	32.1	51.8	51.8	69	69	69	84.7
	Compression R		16.5:1	15 :1	15 :1	13 :1	13 :1	14 :1	13.5 :1	13.5 :1	15.3 :1
	Engine Type		4 Cycle Water cooled								
	Aspiration		Turbo charged with Aftercooler								
	Starting System		Starting Electric Motor by Battery								
	Governor		Mechanical Centrifugal Type								
	Fuel Consumption	L/Hr	216.6	246.9	274.3	355	411	470	519	589	794
Coolant Capacity	L	190	190	190	380	380	459	509	530	720	
Lub. Oil Capacity	L	68	68	68	320	320	417	417	417	540	
DIM	Length	mm	4485	4767	4767	5173	5128	6086	6444	6510	7600
	Width	mm	1741	2024	2024	2094	2286	2286	2588	2848	3000
	Height	mm	1986	2223	2223	2367	2332	2331	3051	3295	3400
	Weight	Kg	7500	9000	9000	12500	13500	15500	16500	17000	26000

※ specifications subject to change without notice

※ Fuel Consumption subject to change depend on the condition

MTU ENGINE SERIES

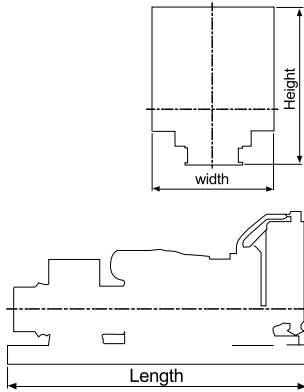
DEMCO



SET MODEL		DIG0700-U	DIG0850-U	DIG0900-U	DIG1000-U	DIG1200-U	DIG1250-U	DIG1500-U		
GENERATOR	Stand-by	KW	700/560	850/720	900/800	1000/880	1200/1000	1250/-	1500/1450	
	Prime	KW	640/510	773/654	820/720	910/800	1080/900	1000/-	1363/1300	
	Voltage	V	220/127, 380/220, 440/254, 3300, 6600							
	Frequency	Hz	60/50							
	Revolution	RPM	1800/1500							
	Phase/Wire		1Ø 2W, 1Ø 3W, 3Ø 3W, 3Ø 4W							
	Power Factor	%	80(LA GGING)							
	Excitation		Brushless Self Excitation Revolving Field							
	Insulation Class		F or H							
ENGINE	Manufacturer		MTU							
	Model		12V2000G45/25	12V2000G85/65	16V2000G45/25	16V2000G85/65	18V2000G85/65	18V2000G765	12V4000G43/23	
	Stand-by	HP	1046/852	1194/1026	1354/1194	1495/1307	1757/1475	1839/-	2328/2112	
	Prime	HP	952/778	1026/932	1227/1086	1354/1194	1597/1341	-	2038/1904	
	Revolution	RPM	1800/1500							
	No. of Cylinder		V-12	V-12	V-16	V-16	V-18	V-18	V-12	
	Bore X Stroke	mm	130×150	130×150	130×150	130×150	130×150	135×156	170×210	
	Displacement	L	23.88	23.88	31.84	31.84	35.82	40.2	57.24	
	Compression Ratio		14 : 1	16 : 1	16 : 1	16 : 1	16 : 1	17.5 : 1	16.5 : 1	
	Engine Type		4 Cycle Water cooled							
	Aspiration		Turbo charged and Air-to-air intercooled				Turbo charged and air-to-water intercooled	Turbo charged with Aftercooler	Turbo charged and air-to-water intercooled	
	Starting System		Starting Electric Motor by Battery							
	Governor		Electronic Type							
	Fuel Consumption	L/Hr	196/155	217/180	240/207	264/227	315/262	329	405/345	
	Coolant Capacity	L	170	170	210	210	520	520	520	
Lub. Oil Capacity	L	77	77	102	102	130	122	260		
DIM	Length	mm	3900	3900	4270	4370	4420	5036	4980	
	Width	mm	1580	1480	1760	1770	2010	2275	2430	
	Height	mm	1860	2096	2292	2250	2700	2454	2950	
	Weight	Kg	5500	7600	9300	9700	11500	9525	13000	

※ Specifications subject to change without notice

※ Fuel Consumption subject to change depend on the condition



SET MODEL		DIG1750-U	DIG2000-U	DIG2300-U	DIG2500-U	DIG2800-U	DIG3300-U	
GENERATOR	Stand-by	KW	1750/1600	2000/1800	2300/2000	2500/2250	2800/2490	3300/2690
	Prime	KW	1590/1450	1818/1650	2100/1800	2300/2000	2500/2250	2840/2440
	Voltage	V	220/127, 380/220, 440/254. 3300, 6600					
	Frequency	Hz	60/50					
	Revolution	RPM	1800/1500					
	Phase/Wire		1Ø 2W, 1Ø 3W, 3Ø 3W, 3Ø 4W					
	Power Factor	%	80(LA GGING)					
	Excitation		Brushless Self Excitation Revolving Field					
	Insulation Class		F or H					
ENGINE	Manufacturer		MTU					
	Model		12V4000G83/63	16V4000G43/23	16V4000G83/63	20V4000G43/23	20V4000G83/63	20V4000G83/63
	Stand-by	HP	2561/2347	3058/2635	3353/2930	3674/3245	4036/3581	4680/3822
	Prime	HP	2328/2112	2709/2411	3058/2635	3339/2950	3674/3245	4036/3473
	Revolution	RPM	1800/1500					
	No. of Cylinder		V-12	V-16	V-16	V-20	V-20	V-20
	Bore X Stroke	mm	170x210	170x210	170x210	170x210	170x210	170x210
	Displacement	L	57.24	76.32	76.32	95.4	95.4	95.4
	Compression Ratio		16.5:1	16.5:1	16.5:1	16.5:1	16.5:1	16.5:1
	Engine Type		4 Cycle Water cooled					
	Aspiration		Turbo charged and Air-to-air intercooled					
	Starting System		Starting Electric Motor by Battery					
	Governor		Electronic Type					
	Fuel Consumption	L/Hr	451/394	532/433	605/438	634/549	711/602	875/647
	Coolant Capacity	L	520	580	580	580	580	580
Lub. Oil Capacity	L	260	300	300	390	390	390	
DIM	Length	mm	5350	6500	67200	7636	7600	8100
	Width	mm	2200	2900	2900	2900	4638	2900
	Height	mm	2750	2835	2887	2887	3100	3100
	Weight	Kg	15300	16180	19000	23800	24500	26500

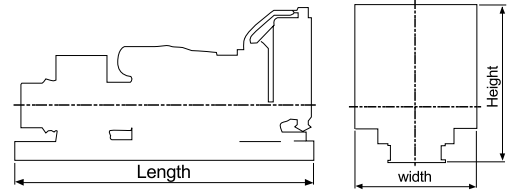
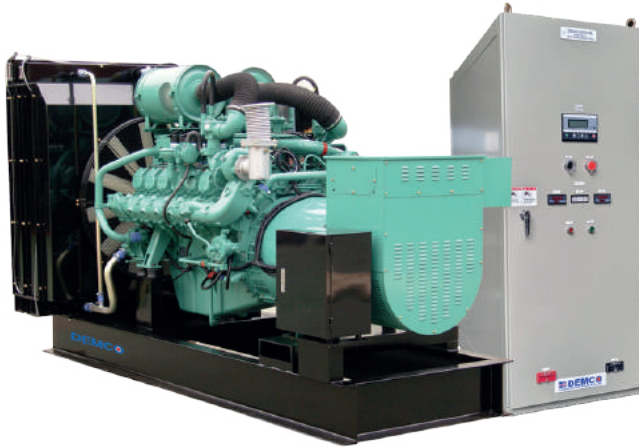
※ Specifications subject to change without notice

※ Fuel Consumption subject to change depend on the condition

NATURAL GAS

ENGINE SERIES

DEMCO



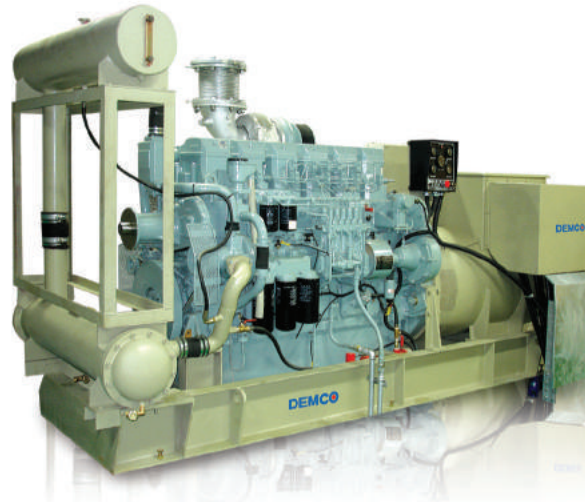
SET MODEL		DGG4145	DGG4200	DGG4260	DGG4330	DGG4400	
GENERATOR	Stand-by	KW	143/121	198/170	264/220	330/280	396/342
	Prime	KW	130/110	180/154	240/199	300/254	360/301
	Voltage	V	220/127, 380/220, 440/254				
	Frequency	Hz	60/50				
	Revolution	RPM	1800/1500				
	Phase/Wire		1Ø 2W, 1Ø 3W, 3Ø 3W, 3Ø 4W				
	Power Factor	%	80(LA GGING)				
	Excitation		Brushless Self Excitation Revolving Field				
	Insulation Class		F or H				
ENGINE	Manufacturer		DOOSAN				
	Model		GE08T1	GE1 2T1	GV1 58T1	GV1 80T1	GV222T1
	Stand-by	PS	224/191	299/262	404/344	508/434	613/523
	Prime	PS	204/174	272/238	367/313	462/394	557/476
	Revolution	RPM	1800/1500				
	No. of Cylinder		6	6	8	10	12
	Bore X Stroke	mm	111×139	123×155	128×142	128×142	128×142
	Displacement	L	8.071	11.051	14.618	18.273	21.927
	Compression Ratio		10.5:1				
	Engine Type		4 Cycle Water cooled				
	Aspiration		Turbo charged and intercooled				
	Star		Starting Electric Motor by Battery				
	Go vernor		Electronic Type				
	Fuel Consumption	L/Hr	38.5/31.8	51.4/43.4	70.6/57	90.5/73.4	109.3/90.9
	Coolant Capacity	L	18	21	36	45	45
Lub. Oil Capacity	L	23	25	31	35	35	
DIM	Length	mm	2750	2800	3200	3400	3400
	Width	mm	900	1000	1200	1300	1450
	Height	mm	1500	1700	1750	1800	2000
	Weight	Kg	2450	3200	3880	4100	4930

※ Specifications subject to change without notice

※ Fuel Consumption subject to change depend on the condition

I Standard

- Generator Set w/Bed Frame
- Control Panel
- Industrial Silencers
- Mounted Radiator
- Battery
- Flexible Connector
- Spare part & Tools
- Document



I Options

- Heat Exchanger System
- Sub-Based Fuel Tank
- Free-Standing Fuel Tank
- Parallel System



- Weather Proof Canopy for Exterior Use (Enclosure Type)



- Weather & Sound Proof Canopy (Enclosure Type)

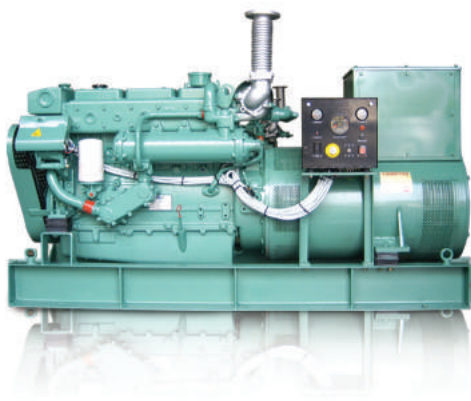
I Controller



MARINE DIESEL GENERATOR SET

DEMCO

DOOSAN ENGINE SERIES

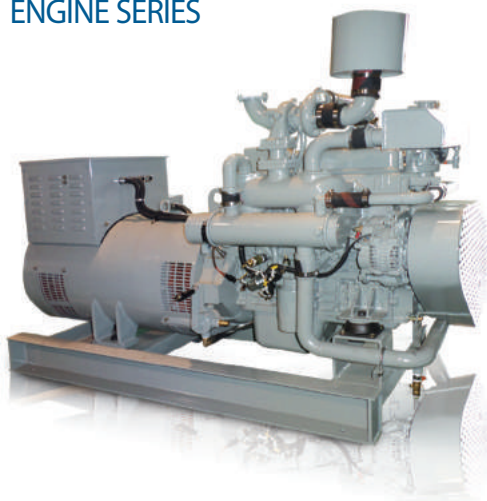


SPECIFICATION

SET MODEL		DDG4080	DDG4100	DDG4115	DDG4170	DDG4180	DDG4230	DDG4330	DDG4400	DDG4500	
GENERATOR	CONTINUOUS (KV A/KW)	60Hz	100/80	130/104	144/115	210/168	220/176	280/224	410/328	500/400	625/500
		50Hz	85/68	120/96	125/100	170/136	200/160	210/192	345/276	415/332	510/408
	POLE	4P									
	VOLTAGE/PHASE	225, 380, 445 VAC / 3Ø									
	INSULATION CLASS	F or H CLASS									
	EXCITATION	SELF-EXCITING BRUSHLESS									
POWER FACTOR	0.8(LAGGING)										
ENGINE MAKER		DOOSAN									
ENGINE	MODEL	AD136	AD136T	AD136TI	AD086TI	AD196TI	AD126TI	AD158TI	AD180TI	AD222TI	
	TYPE	4CYCLE/DIESEL									
	CONTINUOUS(HP)	60Hz	126	170	188	253	270	336	480	600	720
		50Hz	105	145	157	205	235	280	410	485	606
	REVOLUTION(R.P.M)	1800(60Hz) / 1500(50Hz) RPM									
	STARTING METHOD	ELECTRIC STARTING / DC 24V									
COOLING METHOD	INDIRECT SEAWATER COOLING										
FUEL CONSUMPTION (g/HP.hr) AT 60Hz		160	155	153	151	148	152	153	153	150	
DIM	Length	mm	2100	2150	2200	2210	2320	2400	2540	2700	2900
	Width	mm	789	810	825	825	850	850	1230	1230	1230
	Height	mm	1132	1136	1136	1180	1240	1300	1300	1300	1300
	Weight	kg	1328	1405	1571	1613	1952	2108	2675	3138	3619

※ NOTICE: RULE CLASS - KR, R.M.R.S

HYUNDAI ENGINE SERIES



SPECIFICATION

SET MODEL		DHG4030	DHG4050	DHG4070	
GENERATOR	CONTINUOUS (KV A/KW)	60Hz	38/30	63/50	88/70
	POLE	4P			
	VOLTAGE/PHASE	225, 380, 445 VAC / 3Ø			
	INSULATION CLASS	F or H CLASS			
	EXCITATION	SELF-EXCITING BRUSHLESS			
	POWER FACTOR	0.8(LAGGING)			
ENGINE MAKER		HYUNDAI			
ENGINE	MODEL	D4AF	D4AK	D6BR	
	TYPE	4CYCLE / DIESEL			
	CONTINUOUS(HP)	60Hz	50	69	107
	REVOLUTION(R.P.M)	1800 R.P.M			
	STARTING METHOD	ELECTRIC STARTING DC 24V			
	COOLING METHOD	INDIRECT SEA WATER COOLING			
FUEL CONSUMPTION (g/HP.hr) AT 60Hz		168	158	175	
DIM	Length	mm	1500	1600	1960
	Width	mm	780	780	750
	Height	mm	980	980	1100
	Weight	kg	660	830	1320

※ NOTICE: RULE CLASS - K.S.T

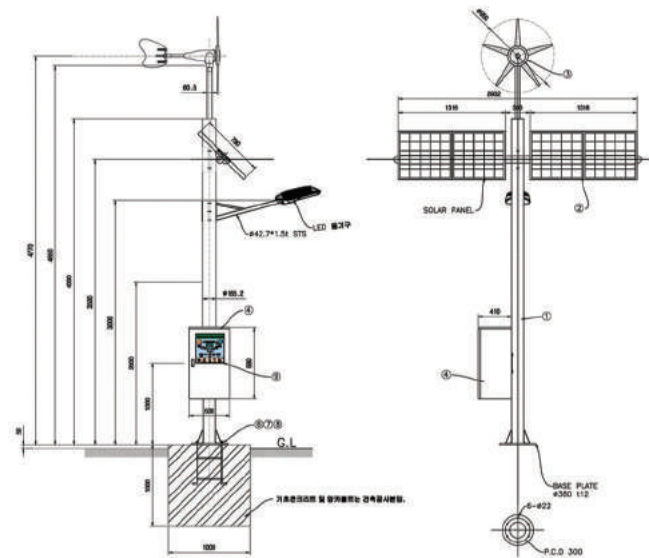
EMERGENCY GENERATOR SERIES



SPECIFICATION

SET MODEL		DDG4080E	DDG4100E	DDG4115E	DDG4130E	DDG4200E	DDG4300E	DDG4350E	DDG4450E	
GENERATOR	CONTINUOUS (KV A/KW)	60Hz	100/80	130/104	144/115	188/150	250/200	375/300	438/350	550/440
		50Hz	85/68	120/96	125/100	150/120	213/170	313/250	350/280	450/360
	POLE	4P								
	VOLTAGE/PHASE	225, 380, 445 VAC / 3Ø								
	INSULATION CLASS	F or H CLASS								
	EXCITATION	SELF-EXCITING BRUSHLESS								
POWER FACTOR	0.8(LAGGING)									
ENGINE MAKER		DOOSAN								
ENGINE	MODEL	AD136	AD136T	AD136TI	AD086TI	AD126TI	AD158T	AD180TI	AD222TI	
	TYPE	4CYCLE/DIESEL								
	CONTINUOUS(HP)	60Hz	126	170	188	253	336	480	600	720
		50Hz	105	145	157	205	280	410	485	606
	REVOLUTION(R.P.M)	1800(60Hz) / 1500(50Hz) R.M								
	STARTING METHOD	ELECTRIC STARTING DC 24V								
COOLING METHOD	RADIATOR COOLING									
FUEL CONSUMPTION (g/HP.hr) AT 60Hz		160	155	153	151	152	153	153	150	
DIM	Length	mm	2500	2500	2500	2700	3000	3000	3200	3400
	Width	mm	830	830	830	950	1020	1400	1400	1400
	Height	mm	1420	1420	1420	1520	1560	1875	1875	2075
	Weight	kg	1700	1730	1750	2200	2550	3520	4400	5500

※ NOTICE: RULE CLASS - KR, R.M.R.S, DNV



분 류	HWS-LED 104D, LED60W, 5M
용 도	하이브리드 가로등
점등 시간	약 8시간(일)
모듈	320Wp(80Wp×4)
풍력발전기	정격 62W 최대 200W
배터리	300A(100A×3)
높이	5M
LAMP	LED 60W
컨트롤러	12V/30A
부조일수	3일
A/S	즉시대응(자체 기술 보유)
디자인	기능 추가 및 변경 가능



Toward the Future & the with



DEMCO

 주식
회사 **대흥기전**
DAEHUNG ELECTRIC MACHINERY CO.,LTD.

본사 · 공장

우. 49455 부산광역시 사하구 감천항로 487(구평동)
TEL. 051-266-5995(代) FAX. 051-263-7007

서울사무소

14322 경기도 광명시 하안로 60, C동 703호(소하동, 광명테크노파크)
TEL. 02-744-7906(代) FAX. 02-744-7946